



Advertiser 3 Lite

New Generation, Smart and Light!

Cloud Print / Quick-Disassemble Nozzle / No Leveling Printing
Removable Platform / Automatic Filament Feeding



PRODUCT DETAILS



Patented Extruder Structure + No Leveling Printing

FlashForge patented extruder structure, fully upgraded, steady filament loading. Ready-to-use and no leveling printing preventing any printing imprecisions due to improper leveling.

Removable Nozzle

Buckle design removable nozzle supports quick replacement, solves extruder clogging problem; no need to disassemble whole extruder when performing maintenance.



Flexible Build Plate

Shape-memory material plate heats evenly, supports bending without deformation.

Build size is 150×150×150mm, supports heating temperature up to 100°C, supports ABS filament.

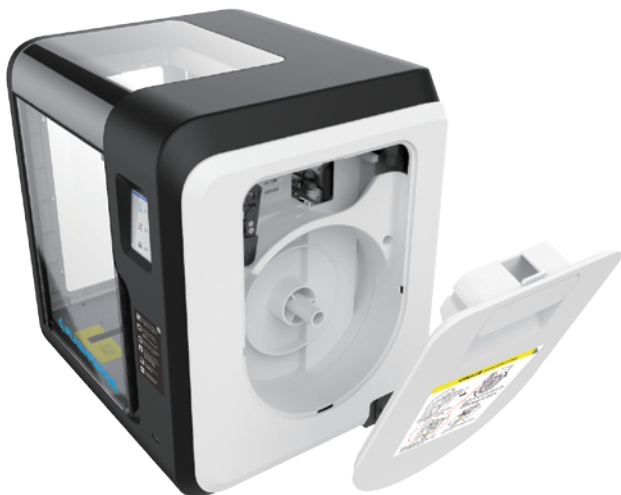
Much easier to take down models, even big models.

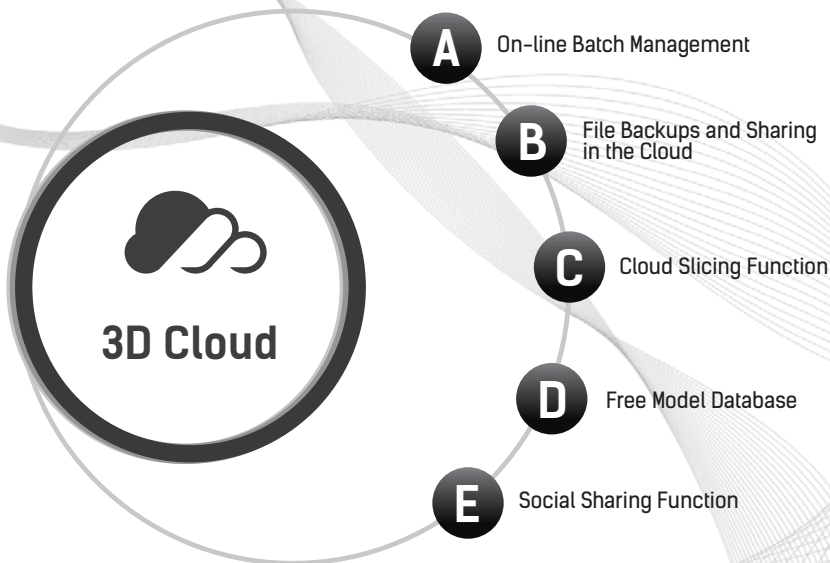


Automatic Filament Loading / Unloading Function

Adventure 3 Lite has automatic filament feeding function:

Printer will detect filament and start loading automatically after filament has been inserted into the intake.





3D Cloud is an online platform, achieving Cloud management for 3D printers and the uploading and storage of 3D printing files, providing a massive model database. Together with the social sharing function, 3D Cloud is an integral 3D printing resource platform. In the future, 3D Cloud will add an online model design/modify function, support online printing status checks with a linked camera, and support cell phone Apps to achieve mobile cloud management. Please enter the "3D Printing+" era together with FlashForge!

- **Online Batch Management:**

Files to print transferred from Cloud to printer. Monitor printing progress and status in real time. Manage hundreds of printers easily and in an orderly fashion.

- **File Backups and Sharing in the Cloud:**

Online registered user has own storage space. Files to print can be viewed after being uploaded to the 3D Cloud, avoiding lost files. Files to print are shared and showed in a public platform where user can search, download, and print the models needed.

- **Cloud Slicing Function:**

Files to print are sliced in the Cloud automatically, then transferred to printer by one click.

- **Free Model Database:**

3D Cloud provides a free model database.

- **Social Sharing Function:**

Support likes, comments, or sharing, providing a platform for user interaction and discussion.

PARAMETERS

Extruder	Printing Precision (mm)	Size (mm)	Package Size (mm)	Build Volume (mm)
1	±0.1-0.2	388x340x405	480x420x510	150x150x150

N.W. / G.W. (kg)	Build Plate Temperature (Highest)
9/13	100°C

FUNCTIONS

No Leveling Printing

Removable Nozzle

Bendable Build Plate

3D Cloud

Automatic Filament Loading / Unloading Function

Models Preview

Ethernet

Heatable Plate

Touch Screen

Closed Body

WiFi

USB Stick Interface



@flashforge3dprinters



@ff3dprinters



flashforge 3D printer



FLASHFORGE CORPORATION

Tel: +86 579 82273989 Web: www.flashforge.com E-mail: sales@flashforge.com
Add: 2/F, No.518, Xianyuan Road, Jinhua, Zhejiang, China