

SZ05-ZN/EN-A06

FINDER / 发现者

# Quick Start Guide

## 快速启动指南

中文 P10

**⚠ WARNING**

1. Hot! Avoid touching the heating nozzle in operation.
2. Moving parts in printer may cause injury. Do not wear gloves or other sources of entanglement in operation.

**⚠ 注意事项**

1. 高温危险！打印机喷嘴在工作时会被加热，操作时请避免接触！
2. 可动部件可能会造成卷入挤压和切割伤害。操作机器时请不要佩戴手套或缠绕物。

**USER GUIDE  
说明书**

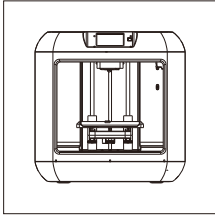
<<Quick Start Guide>> and <<USER GUIDE>> will continually update. You can visit Flashforge's official website [www.flashforge.com](http://www.flashforge.com) to view the latest updated version online.

《快速启动指南》和《使用说明书》会持续更新，您可以访问闪铸科技官方网站 [www.sz3dp.com](http://www.sz3dp.com) 查看最近更新的版本。  
(技术支持 - 下载中心 - 说明书/快速启动指南下载)

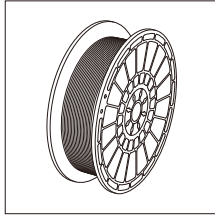
**Slicing Software  
切片软件**

You can visit Flashforge official website [www.flashforge.com](http://www.flashforge.com) to download the latest Slicing Software FlashPrint.  
请在闪铸官网下载最新版本的切片软件FlashPrint

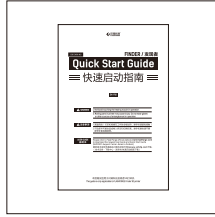
# Kit Contents



3D Printer



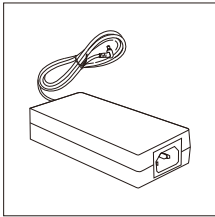
Filament Spool



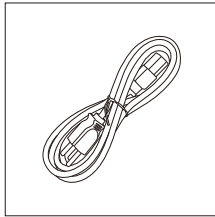
Quick Start Guide



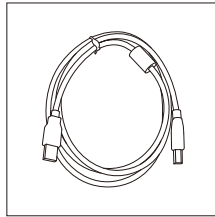
After-sales Service Card



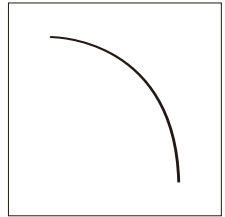
Power Adapter



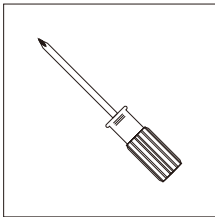
Power Cable



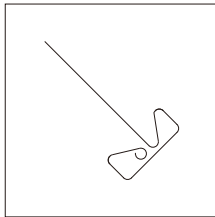
USB Cable



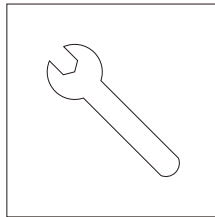
Filament Guide Tube



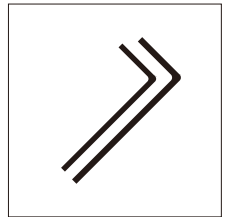
Screwdriver



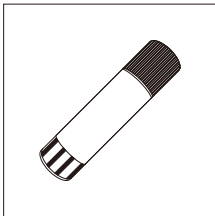
Unclogging Pin Tool



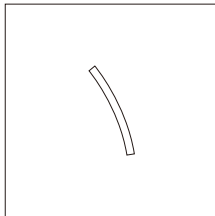
Wrench



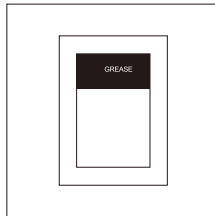
Allen Wrench



Solid Glue

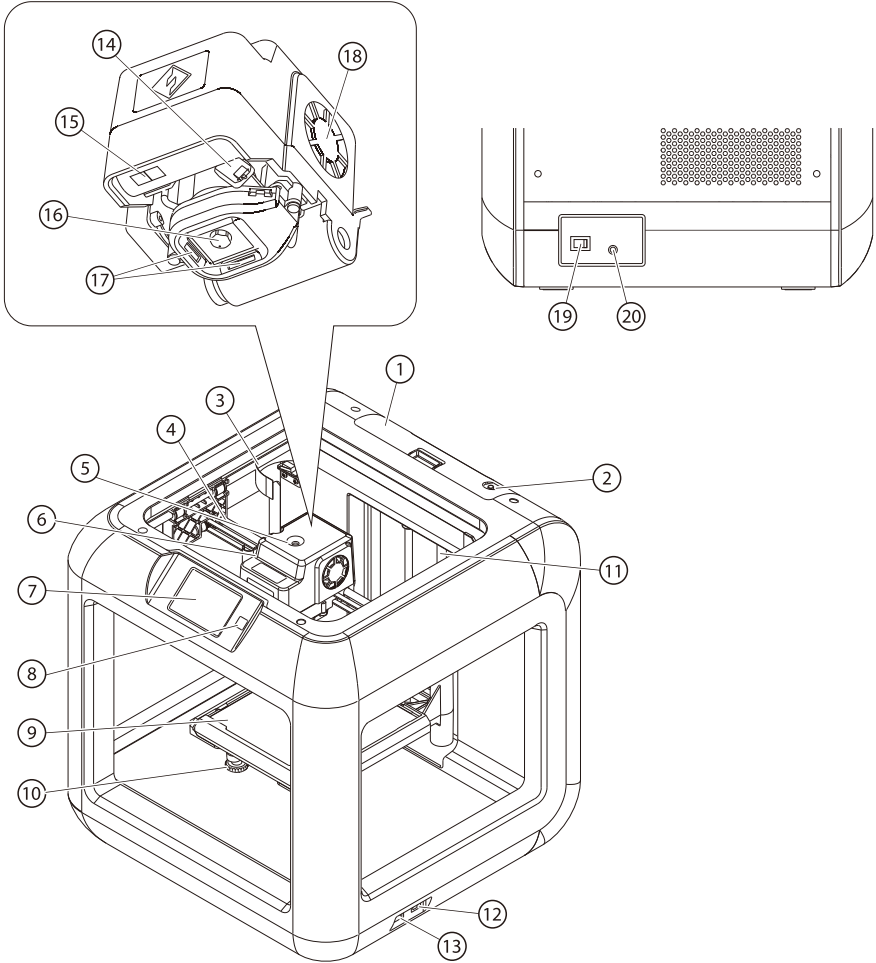


PTFE Tube



Grease

## Getting to Know Your Finder



- |                       |                    |                      |                        |
|-----------------------|--------------------|----------------------|------------------------|
| 1. Filament Cartridge | 2. Filament Outlet | 3. Y-Axis Guide Rod  | 4. X-Axis Guide Rod    |
| 5. Filament Inlet     | 6. Spring Presser  | 7. Touch Screen      | 8. Touch Screen Button |
| 9. Build Plate        | 10. Leveling Knob  | 11. Z-Axis Guide Rod | 12. USB Cable Input    |
| 13. USB Stick Input   | 14. Servo          | 15. LED Light        | 16. Nozzle             |
| 17. Turbofan Baffle   | 18. Turbofan       | 19. Power Switch     | 20. Power Input        |

## Unpacking



1. Open the box, grasp the external packing and then lift your Finder out of the box.



2. Remove the external packing and the plastic bag.



3. Remove the top insert.



4. You will see Quick Start Guide, After-sales Service Card, Power Cable, Filament Guide Tube, Tool Bag.



5. Discard the blue tape that holds the flat cable in place. Be careful with the flat cable.



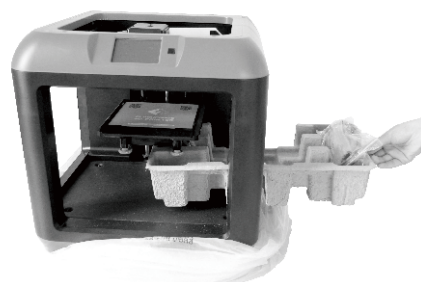
6. Use scissors to cut the four buckles that hold the rods in place.



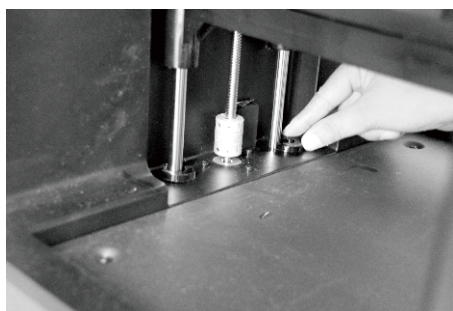
7. Remove the middle insert. A spool of filament is packed inside.



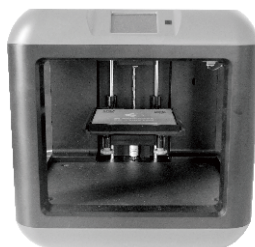
8. Hold on the platform, lift the build plate up with care.



9. Remove the bottom insert. Power adapter, USB cable, solid glue are packed inside.

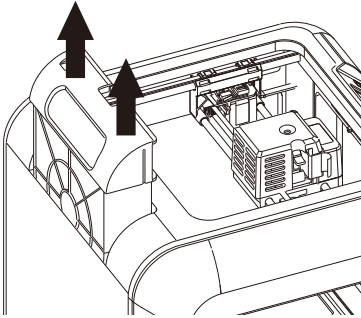


10. Remove the two buckles that hold the Z-axis guide rods.



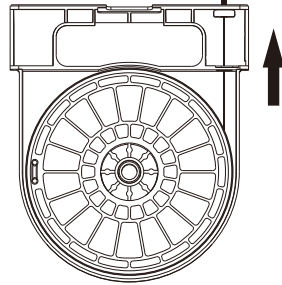
11. Congratulations! You've unpacked your printer. Please keep the kit and packing for future use.

## Hardware Assembly

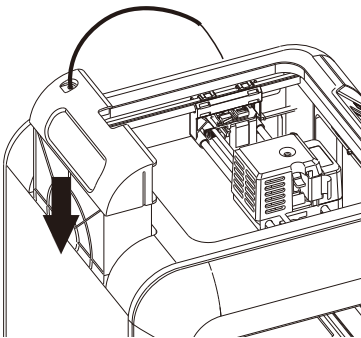


1. Take out the filament cartridge in the rear of the printer.

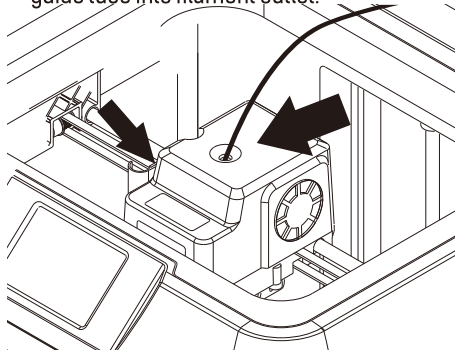
Pay attention to the filament direction from the filament outlet.



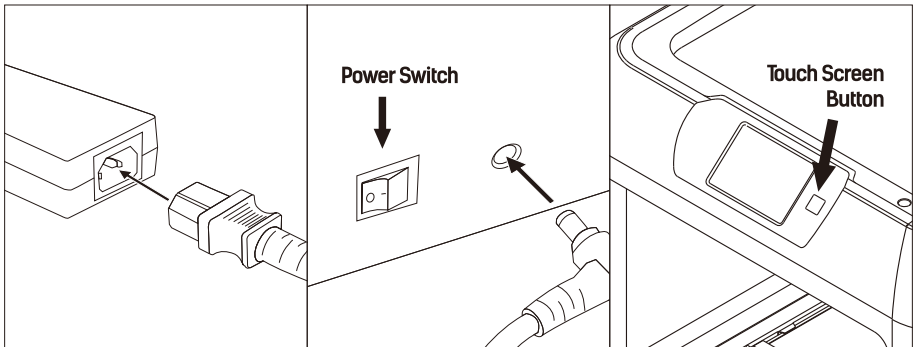
2. Thread the filament through the filament outlet and the guide tube, and put the filament into the cartridge. Insert the black guide tube into filament outlet.



3. Put the filament cartridge back to the Finder.



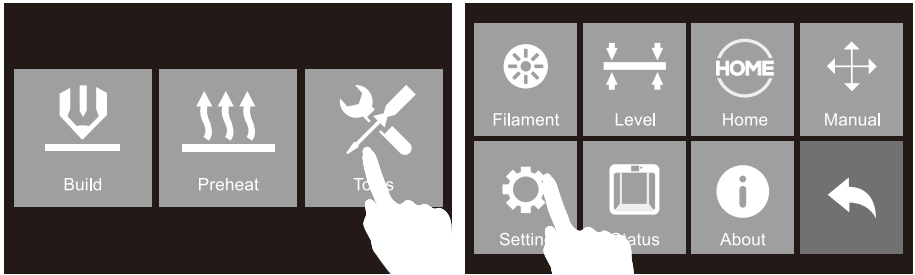
4. Press the spring presser, and insert the filament into the filament intake. Then release the spring presser.



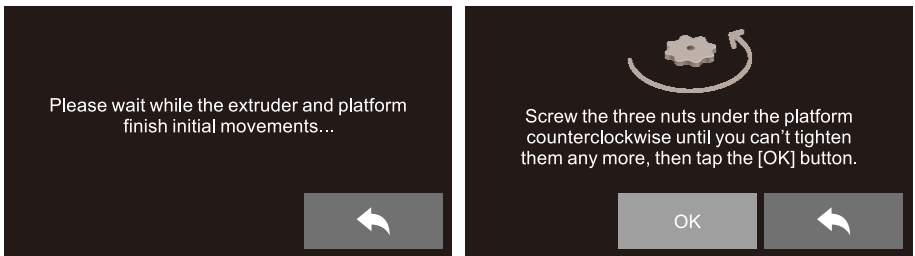
5. Connect power adapter with the power cable and then insert the power supply into the power input on the back of the finder. Turn on the power switch and press the touch screen button to turn on the printer.

# Leveling Build Platform

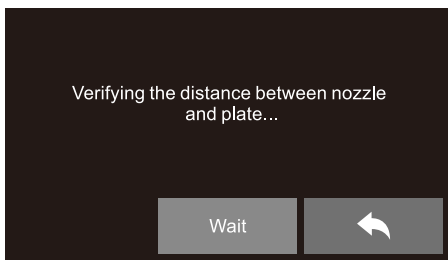
## How to change language



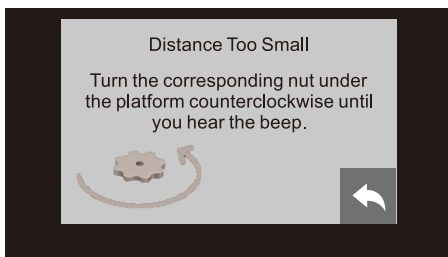
## Start to Leveling Build Platform



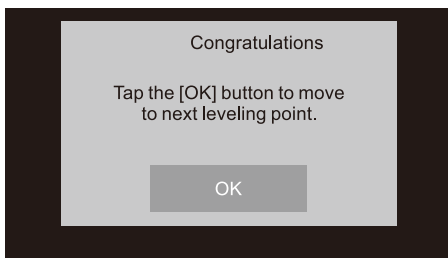
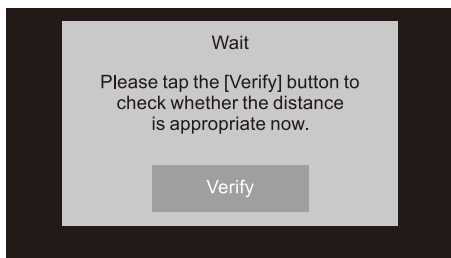
1. Tap [Tools] - [Level] on touch screen. Please wait while the extruder and platform finish initial movements. Screw three knobs under the platform counterclockwise until you can't tighten them any more, then tap [OK] button.



2. Tap [Yes] if you can't tighten all the nuts any more, or tap [No] to continue tightening. After selecting [Yes], the extruder will move towards the first point and the plate will move up and down to verify the distance between nozzle and plate.



3. If the distance between the nozzle and plate is too large, rotate the knob underneath the platform clockwise until you hear a steady beep. If the distance is too small, rotate the knob anticlockwise until you hear a steady beep.

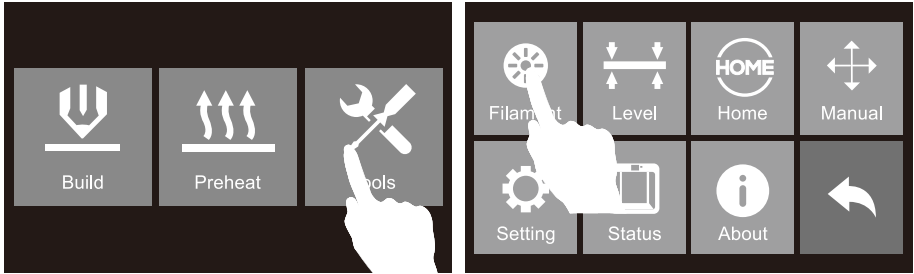


4. Then tap the [Verify] button to check whether the distance is appropriate this time. If the distance is appropriate now, tap [OK] to the second leveling point. If still not, please follow the prompts to adjust again till you see [OK] button.

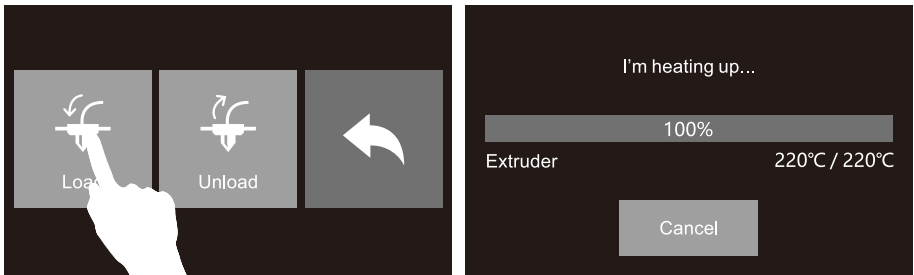
Repeat steps 3 and 4 to level the second and third points. Then tap [Finish] to exit.



## Loading / Changing Filament



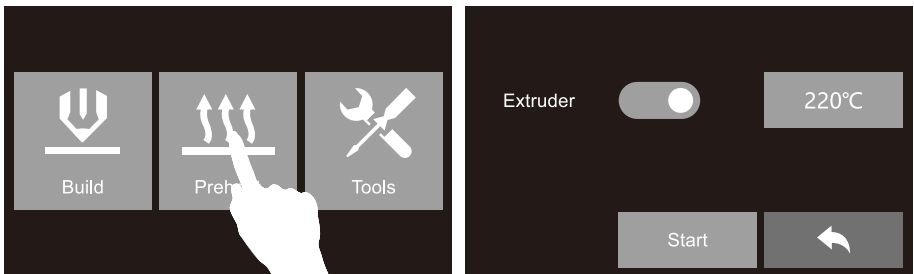
1. Tap [Tools] and then tap [Filament] and [Load] to load filament.



2. The extruder will automatically heat up. Once heated, filament will be drawn through the extruder. Continue extruding until the extruder provides a steady flow of filament.

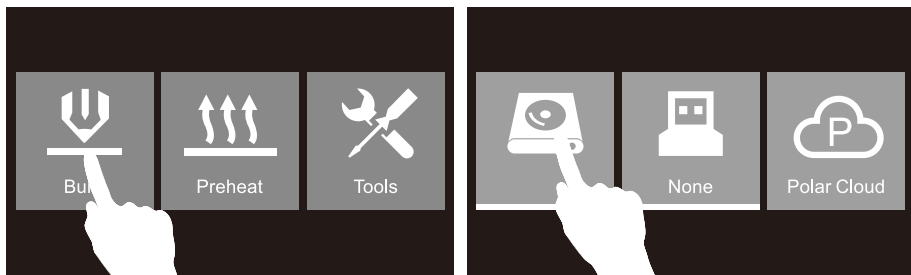
### Changing Filament

Do not pull out the filament with force as it will damage the gears. If the melted filament has cooled down in the extruder, please follow the steps below.

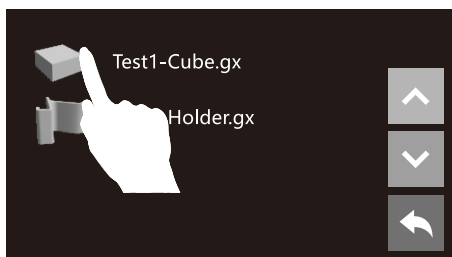
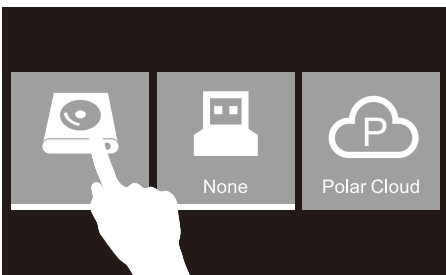


1. Tap [Preheat]--[Start] to heat up the extruder.
2. Once preheated, press the spring presser down with one hand and keep it, then push filament down through with your other hand until you see melted plastic coming out from nozzle for 2 seconds, then pull the filament out quickly, then release the spring presser.
3. Tap the return arrow, then insert the new filament into the filament intake. Select [Tools]-[Filament]-[Load]. The filament will be drawn through the extruder once heated. Wait for the extruder to provide a steady flow of filament.

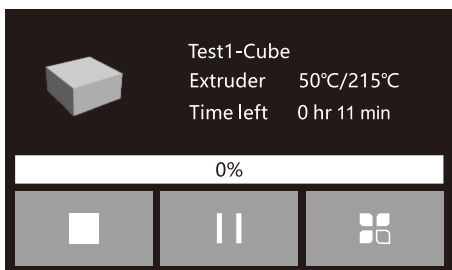
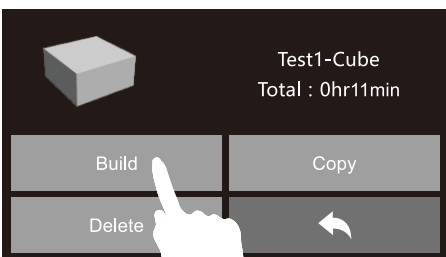
## First Print



1. Tap [Build], tap [Memory Card] icon.

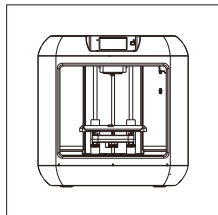


2. Tap [Test1-Cube.gx] - [Build].

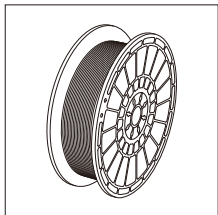


3. After completing preheat, the printer will start printing.

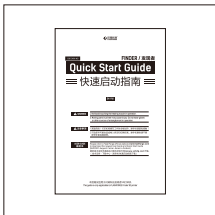
## 装箱物品



3D打印机



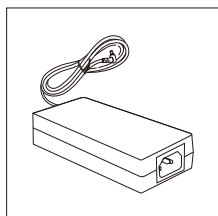
3D打印耗材



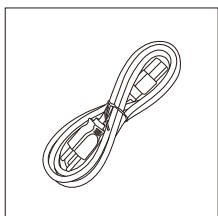
快速启动指南



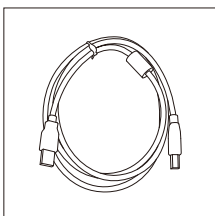
售后服务卡



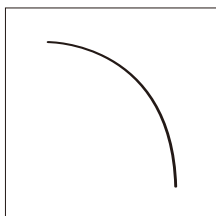
电源适配器



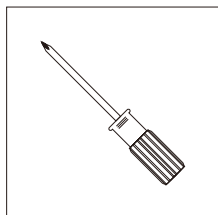
电源线



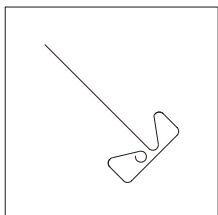
USB线



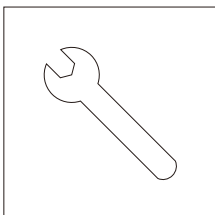
导丝管



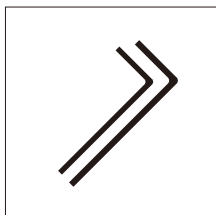
十字螺丝刀



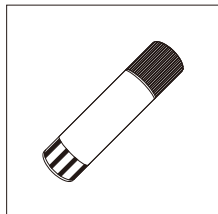
通针



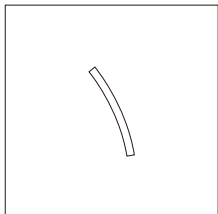
冲压扳手



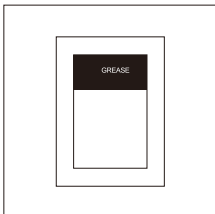
内六角扳手



固体胶

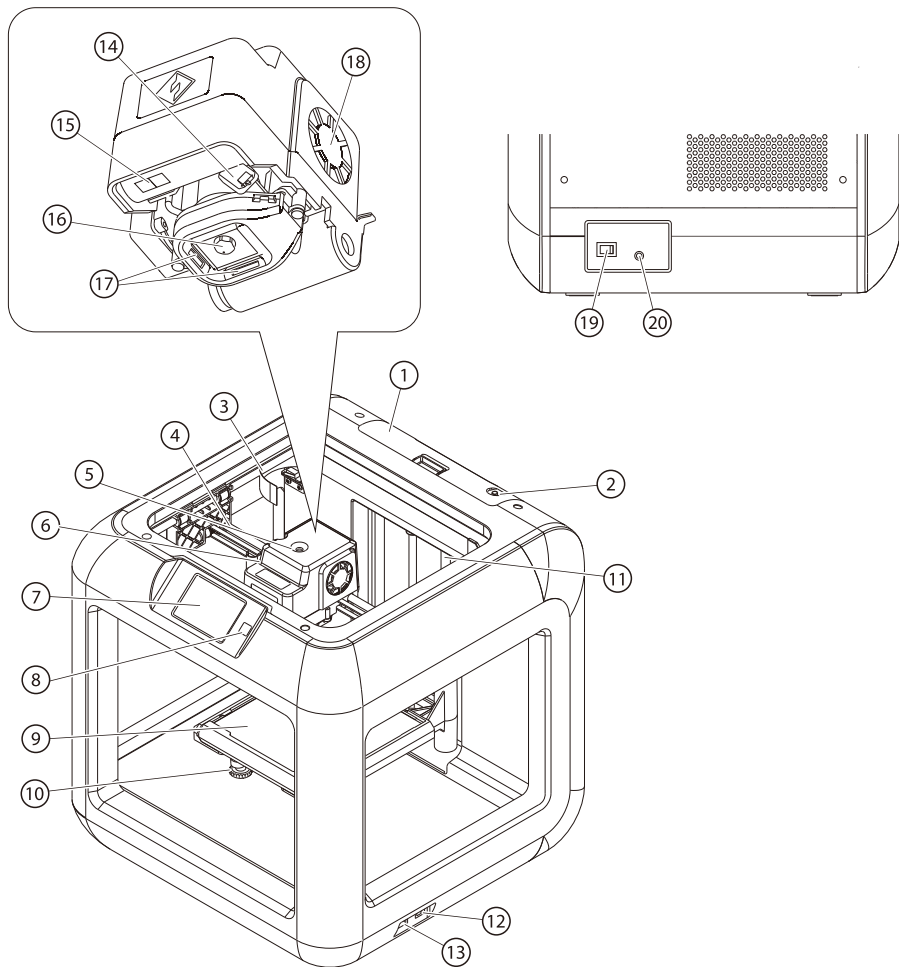


聚四氟管



润滑脂

## 部件介绍



- |          |             |          |          |            |
|----------|-------------|----------|----------|------------|
| 1. 丝盘盒   | 2. 丝盘盒出丝口   | 3. Y轴导轨  | 4. X轴导轨  | 5. 喷头进丝口   |
| 6. 进丝压板  | 7. 触摸屏      | 8. 液晶屏开关 | 9. 打印平台  | 10. 调平螺母   |
| 11. Z轴导轨 | 12. USB线插口  | 13. U盘插口 | 14. 调平舵机 | 15. 喷头灯    |
| 16. 喷嘴   | 17. 涡轮风扇出风口 | 18. 涡轮风扇 | 19. 电源开关 | 20. 电源输入端口 |

## 开箱



1. 打开包装，取出打印机放置于工作台面。



2. 去除在运输中起保护作用的纸塑盒。



3. 去除包装袋。



4. 在打印机顶部的纸塑盒中有快速启动指南、电源线、售后服务卡、导丝管和工具包。



5. 移除顶部的纸塑盒，小心撕除固定喷头排线的无痕胶布。



6. 剪断用来固定导轨的扎带，左右两侧一共四根。



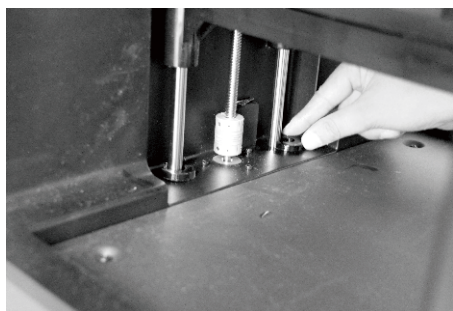
7. 从侧面取出装有打印耗材的纸塑盒。



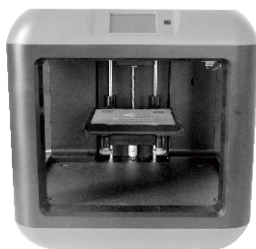
8. 用手拖住打印平台，缓缓将其提升，以便于取出平台下方的纸塑盒。



9. 从侧面取出放置有电源适配器、USB线、固体胶的纸塑盒。

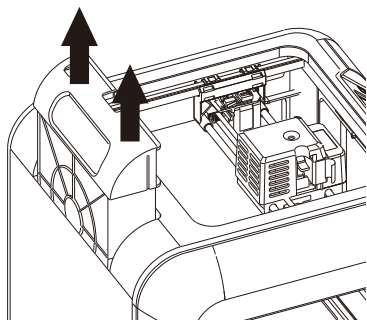


10. 去除Z轴导轨底部的两个卡扣。



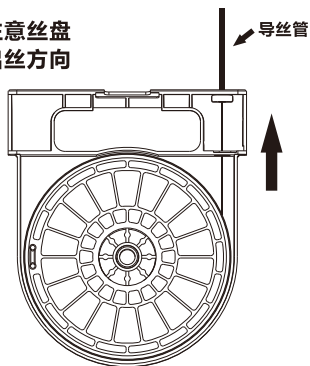
11. 至此Finder的开箱就完成了。请妥善保管配件及包装，以便于后续使用。

## 硬件安装

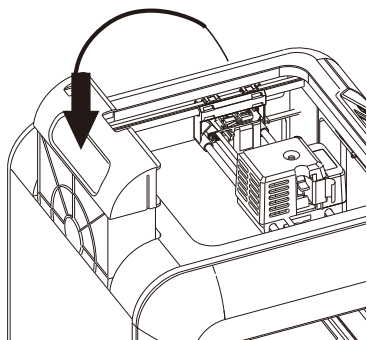


1. 将位于打印机背部的耗材放置盒取出。

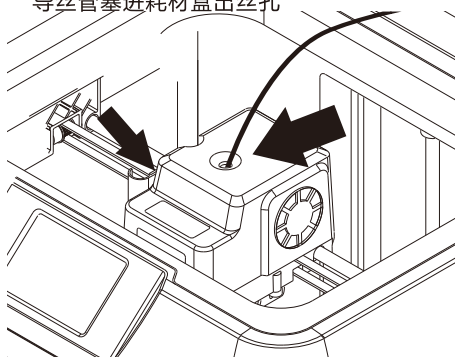
请注意丝盘的  
出丝方向



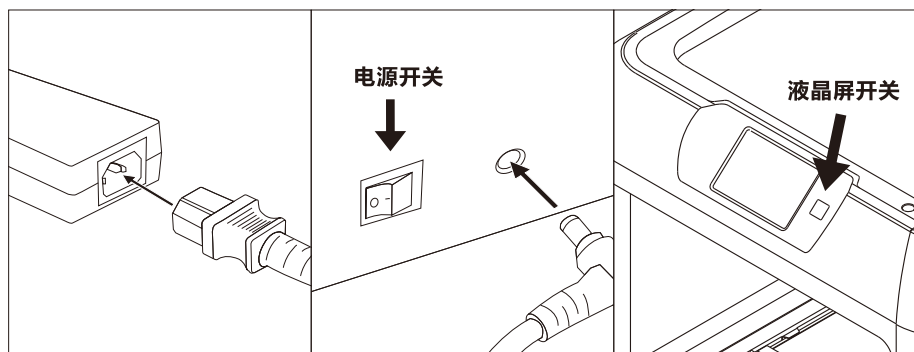
2. 将耗材依次从耗材出丝孔、导丝管穿出，然后将耗材放置在耗材盒内。最后将黑色导丝管塞进耗材盒出丝孔



3. 将装有耗材的丝盘盒放回机身内部。



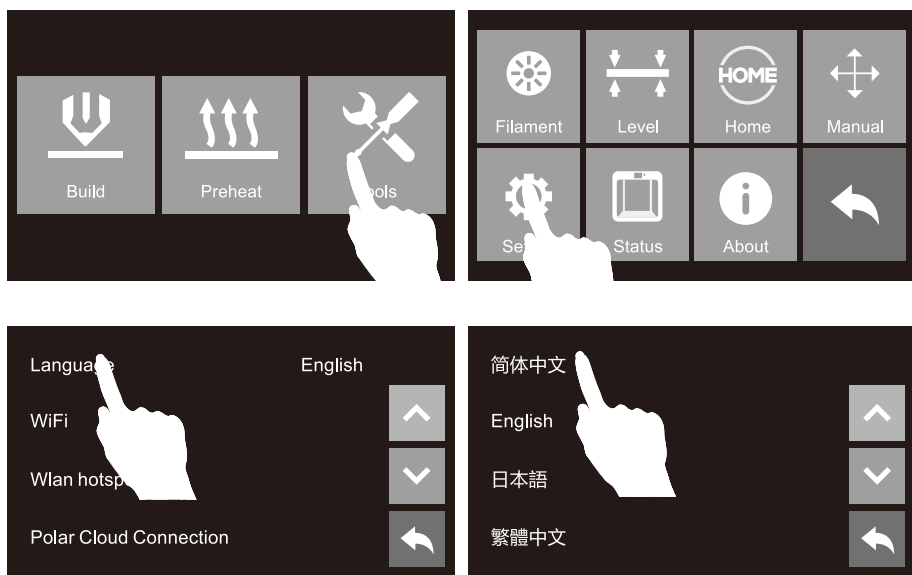
4. 将耗材插入喷头进丝孔。注意插入耗材时请按下喷头左侧的压板。



5. 连接电源适配器和电源线。将电源适配器输出端插入打印机背部的电源输入端口。打开电源开关，然后按下液晶屏右侧的开关开机，准备对平台进行调平。

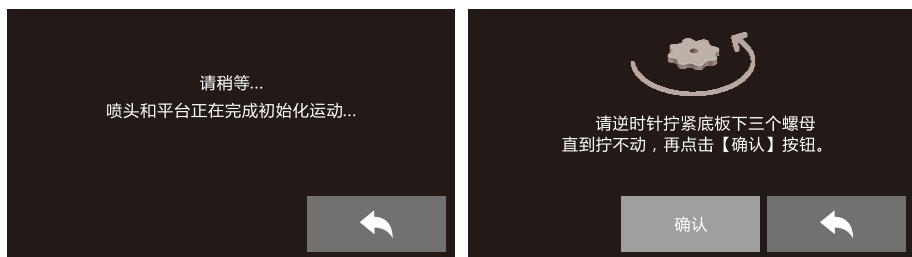
## 调平

### 将液晶屏语言设置为中文



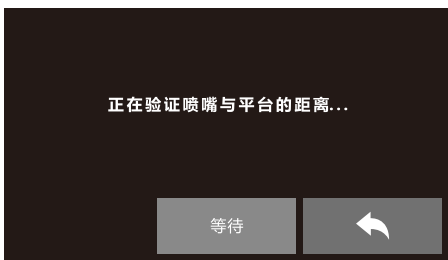
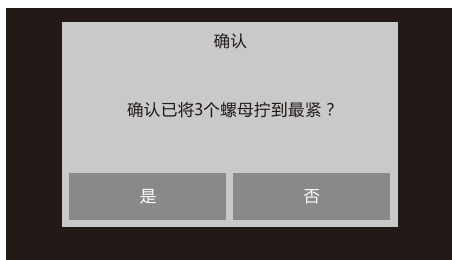
1. 插上电源线，打开电源开关开机。发现者在出厂时默认操作语言为英文，请根据上图步骤切换至中文：在触摸屏上依次点击 [Tools]、[Setting]、[Language]、[简体中文]。

### 开始调平

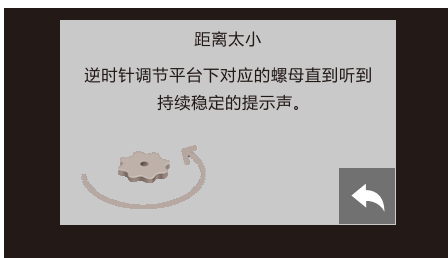
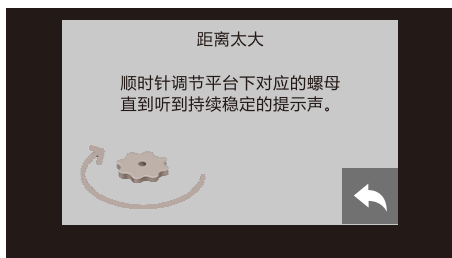


1. 点击触摸屏上依次点击【工具】-【调平】图标，之后根据液晶屏的提示信息进行调平。待初始化运动完成后逆时针拧紧底座下三个螺母直到拧不动，点击【确认】。

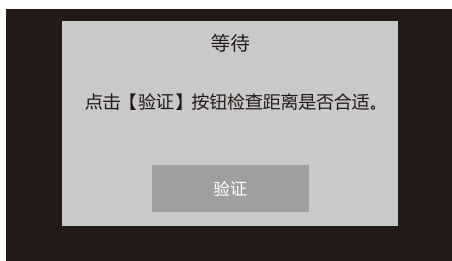




2. 点击【是】后, 喷头开始移向第一个点, 打印平台会验证喷嘴与平台之间的距离。

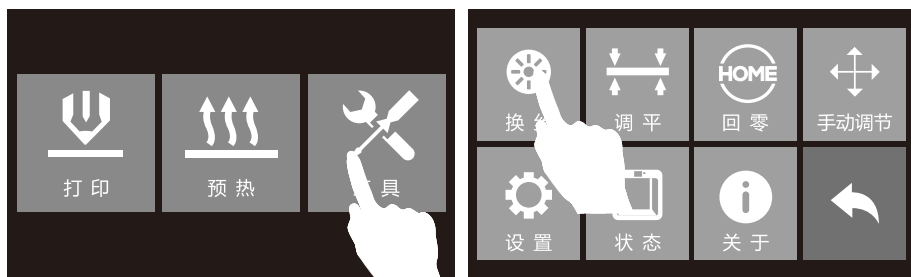


3. 若距离过大, 请顺时针调节平台下对应的螺母直到听到持续稳定的提示声, 之后点击【验证】进行确认。若距离过小, 请根据液晶屏提示逆时针调节平台下对应的螺母。

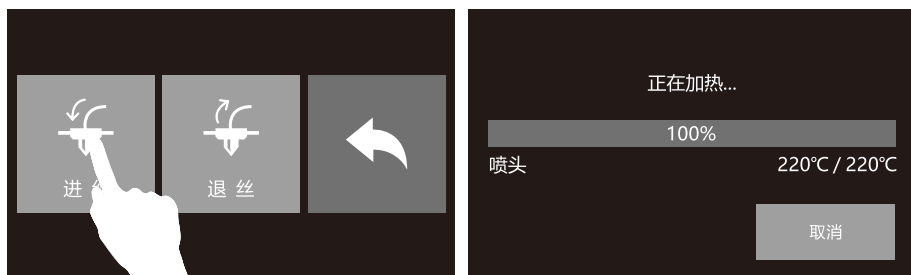


4. 点击【验证】按钮再次验证距离是否合适, 若距离合适, 点击【确认】进行下一点的调平。若距离仍不合适, 请继续按照液晶屏提示操作, 直至调平全部完成。

## 填装 / 更换耗材



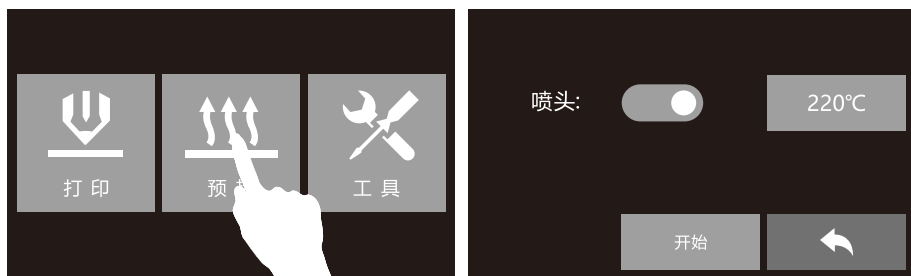
- 1、在首界面点击【工具】，然后点击【换丝】，在换丝界面点击【进丝】。



- 2、在点击“进丝”以后，喷头会自动开始加热。喷头加热到预定的温度后会自动开始进丝。当喷嘴开始出丝时请勿立即停止进丝，直到耗材均匀出丝为止。

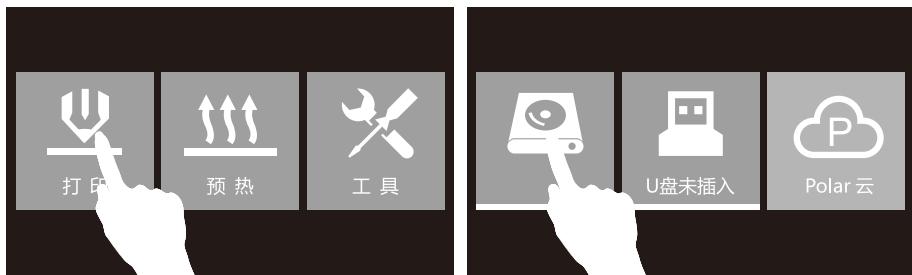
### 换丝操作步骤

请勿用蛮力将耗材拔出，否则会造成喷头堵塞。如果耗材已冷却，请按下列步骤进行耗材更换。

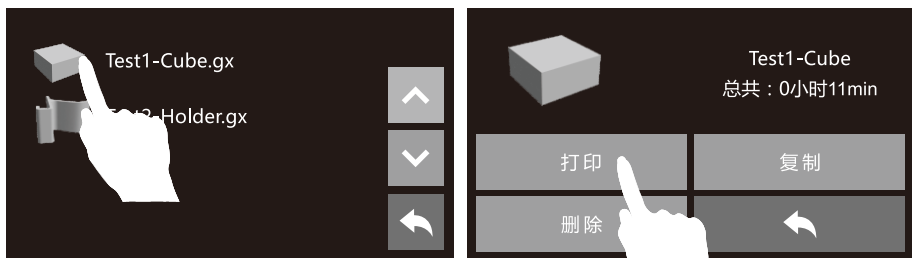


- 1、点击【预热】【开始】来加热喷头，确保喷头加热开关处于打开状态。
- 2、预热完成后，手动进行送丝，看到喷头出丝后，按下喷头压板，并快速将耗材拔出。
- 3、返回首页面，将新耗材放入进丝孔，点击【工具】【换丝】【进丝】，喷头会在加热完成后自动开始进丝，新耗材开始稳定出丝表明换丝操作已经完成。

## 首次打印



1、在首界面点击【打印】，然后选择【打印机内部存储】。



2、选择一个测试模型，然后点击【打印】。



3、打印机开始加热喷头，完成加热后开始打印。



YouTube



优酷自频道

Scan QR to Get More  
After-Sales Support  
扫描二维码获得更多售后支持



浙江闪铸三维科技有限公司  
FLASHFORGE CORPORATION

---

After-Sales Service: [support@flashforge.com](mailto:support@flashforge.com)

售后专线 : [support@flashforge.com](mailto:support@flashforge.com)

---

Amazon.com orders only: [597891915@qq.com](mailto:597891915@qq.com)

美国亚马逊专线 : [597891915@qq.com](mailto:597891915@qq.com)

---

Tel: +86 579 82273989 Web: [www.flashforge.com](http://www.flashforge.com) Add: 2/F, No.518, Xianyuan Road, Jinhua, Zhejiang, China  
电话 : 400 6991063 官方网站 : [www.sz3dp.com](http://www.sz3dp.com) 地址 : 浙江省金华市仙源路518号