

# Power Supply SPECIFICATION

(Model : PS-EX0K10/EAI/P/DI-F)

2020.05.15

## 1. Outline

This specification defines the following product manufactured by Unilam Co., Ltd.

## 2. Type of use

Power supply (B/D) for Excimer lamp

## 3. Model

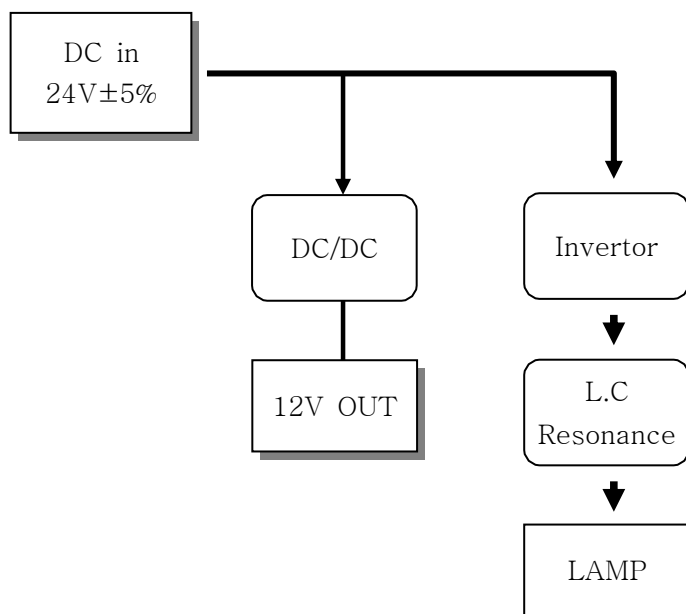
PS-EX0K10/EAI/P/DI-F

## 4. Application

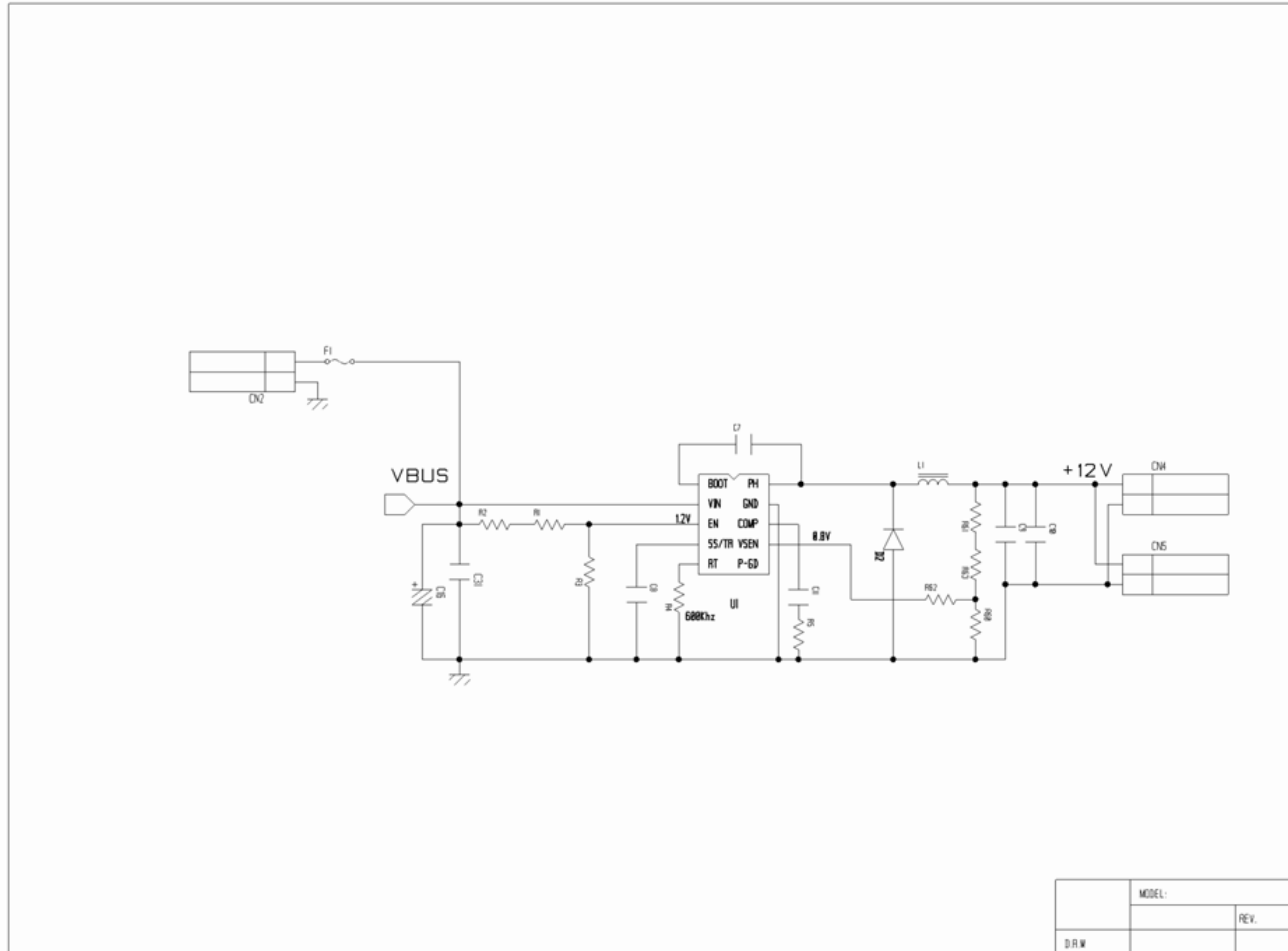
Power source for 100W Excimer lamp

## 5. Structure

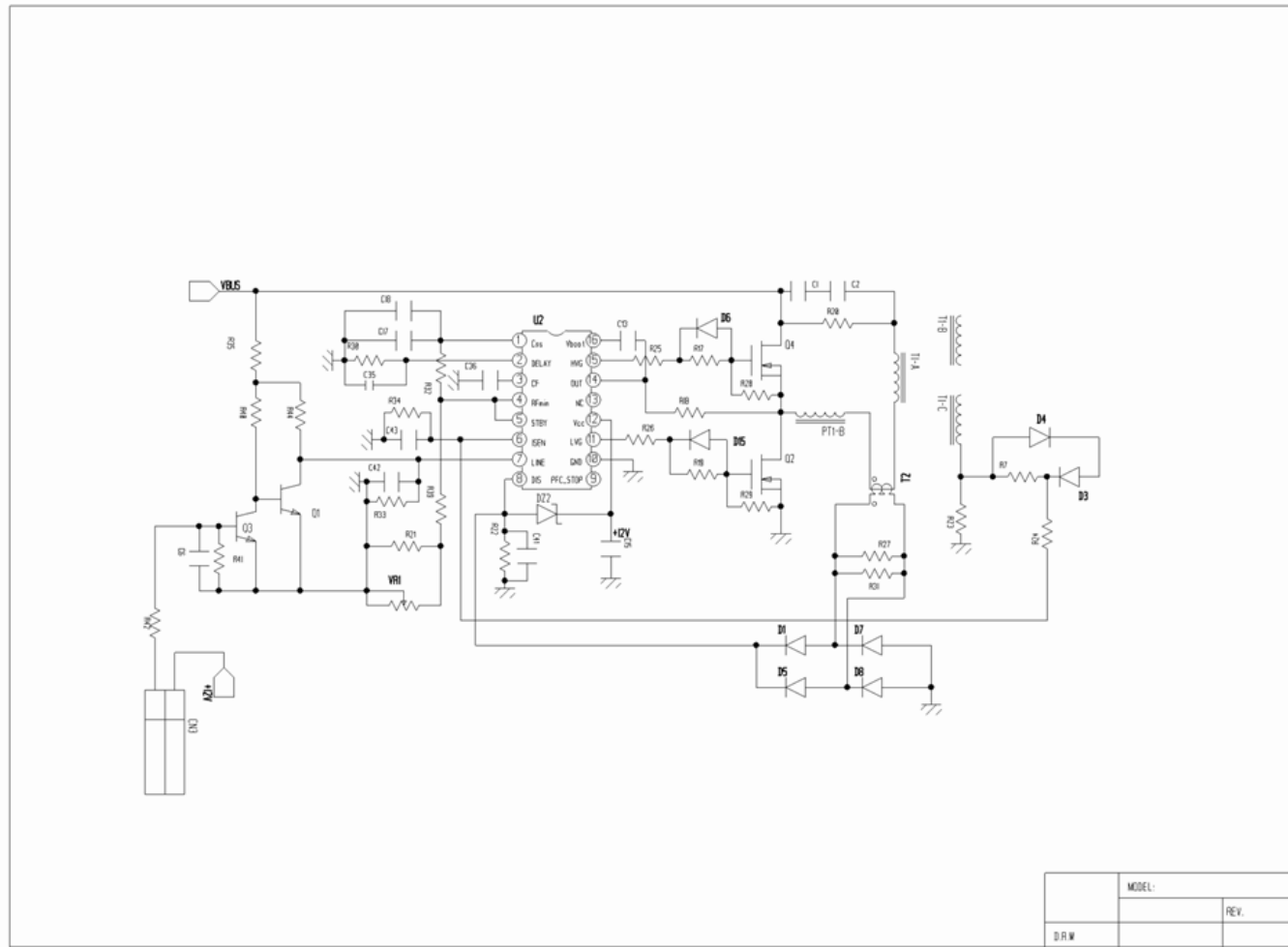
1) Power supply operating Diagram



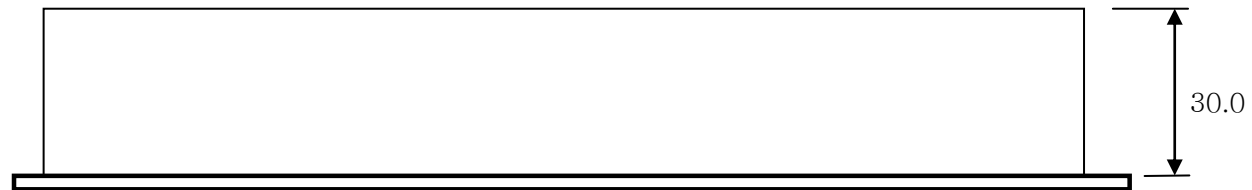
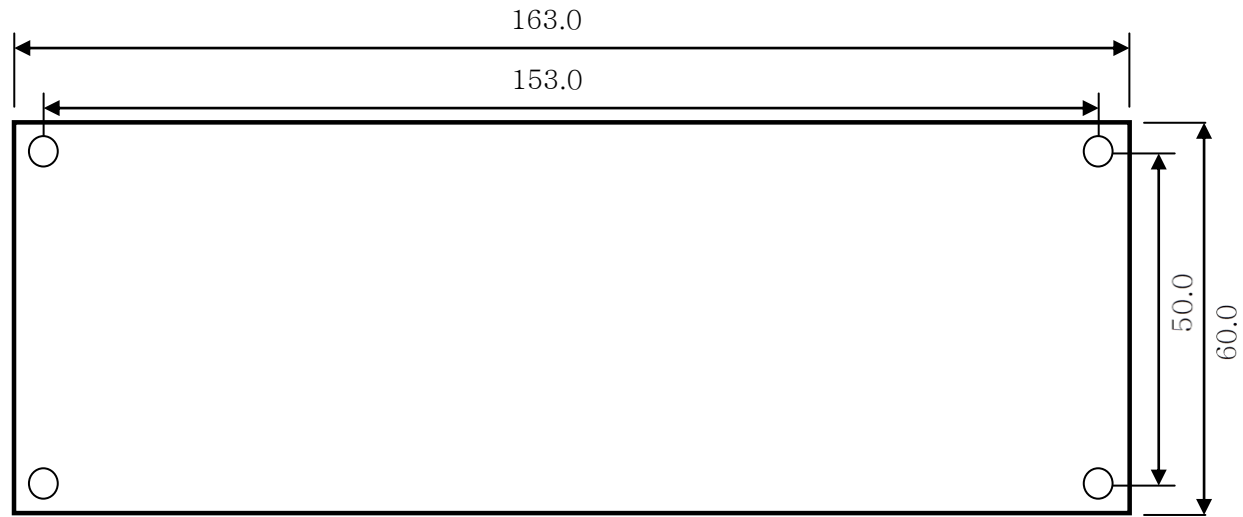
## 2) Circuit diagram



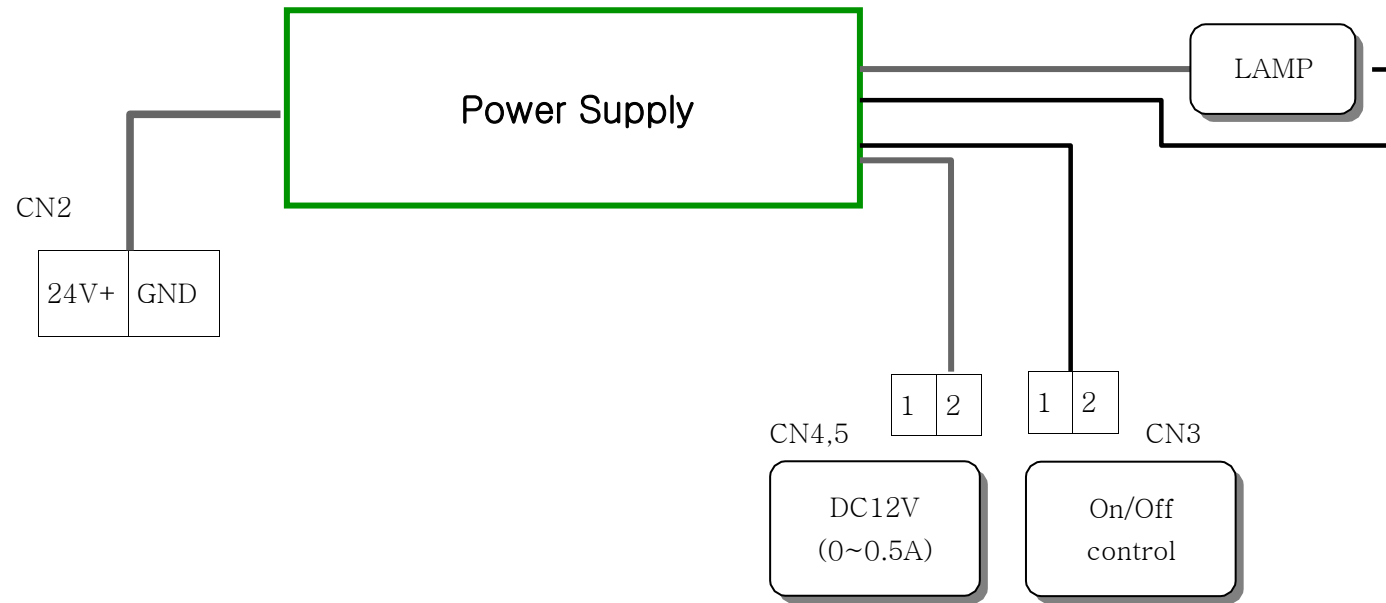
2) Circuit diagram (a)



3) Dimensions



#### 4) Wiring Diagram



## 6. Electrical Characteristics

	Category	Unit	Rated	Remarks
Input	Voltage	V	24	±5%
	Frequency	Hz	-	-
	Current	A	4.7	±10%
	Power	W	100	±5%
	Open Power	W	0.1	Stand by
	Power Factor	%	-	-
	DIMMING	V	-	-
	Lamp Voltage	KV	3	±10%
Output	Lamp Current	A	0.06	±10%
	Operating Frequency	KHz	120	±10%
	Igniting Voltage	KVp	10	Max
	FAIL	-	-	-

### # TEST EQUIPMENTS & CONDITION #

1. Used lamp ;
2. Power meter ; PM-3000A
3. Digital OSC ; 3012 TEK
4. D.M.M ; 3803
5. Current probe ; TCP0030A
6. Ambient ; 24°C

## 7. Operating Conditions

- 1) Rated voltage and LAMP are used, and the connection between the power supply and the lamp should be carried out exactly by the wiring diagram.
- 2) The ballast should be used at a minimum of  $-5\text{ }^{\circ}\text{C}$  and a maximum of  $40\text{ }^{\circ}\text{C}$ .
- 3) In use, a fan should be installed around the power supply to circulate the air around the power supply.
- 4) When two or more power supplies are used at the same time in the same place, the power supply and another power supply must be at least 50mm apart.
- 5) The connecting line between the power supply and the lamp should not Exceed a maximum of 30Cm.
- 6) When replacing the lamp, be sure to replace it with the power turned off.
- 7) The power supply should be installed in a place protected from shock and moisture.

## 8. Warranty

- 1) The quality guarantee of the power supply when it satisfies the conditions of use in paragraph 7 and lights continuously is 1 year from the date of use of the power supply.
- 2) If the ballast that satisfies the conditions of use in paragraph 7 and has been used correctly has an inoperative condition within the quality assurance period, it is exchanged for free.

## 9. Others

- 1) Matters not determined in this specification and drawings shall be decided by bilateral agreement.
- 2) Be careful as the parts of the power supply may be damaged due to impact.
- 3) When connecting the wire, do not cause a defect in the connection.  
(It may shorten the life of the power supply and lamp.)