

LI-IMX219-MIPI-FF-NANO SPECIFICATION

Model:

LI-IMX219-MIPI-FF-NANO-H90
LI-IMX219-MIPI-FF-NANO-H136
LI-IMX219-MIPI-FF-NANO-H145

Rev 1.5
Leopard Imaging Inc.

Contents

Version History	3
Key Information	4
Pin Assignment	5
Mechanical Diagram	6



LI-IMX219-MIPI-FF-NANO SPECIFICATION

Version History

Version	Description	Release Date
1.0	First release.	16. Mar. 2019
1.1	Added H90 and H135 version	22. Mar. 2019
1.2	Updated the dimensions of H90 and H135 modules.	14. Apr. 2019
1.3	Removed H135 module.	26. Apr. 2019
1.4	Added H136 module.	18. Oct. 2019
1.5	Deleted info quoted from sensor spec.	25. May. 2022



LI-IMX219-MIPI-FF-NANO SPECIFICATION

Key Information

Module Part#		LI-IMX219-MIPI-FF-NANO
Compatible Platform		NVIDIA® Jetson Nano™ Developer Kit
Module Size	H90	150.0 (L) x 25.0 (W) x 15.27 (H) mm
	H136	150.0 (L) x 25.0 (W) x 15.3 (H) mm
	H145	150.0 (L) x 25.0 (W) x 14.1 (H) mm
Sensor Type		Sony IMX219 8.08MP Color sensor
Active Pixels		3280 (H) x 2464 (V)
Image Size		Diagonal 4.60 mm (Type 1/4.0)
F/No.		2.6 (H90) / 2.0 (H136) / 2.5 (H145)
Focal Length		2.3 mm (H90) / 1.58 mm (H136) / 1.55 mm (H145)
FOV		90°(H) / 136°(H) / 145°(H)
TV Distortion		< -10% (H90) / < -15%(H136) / < -15% (H145)
Focusing Range		30 cm ~ Infinity
Pixel size		1.12 x 1.12 μm
IR Cutter Filter		Yes
Temperature Range	Operating	-20°C to +60°C
	Storage	-30°C to +80°C
Data Output Interface		CSI-2 MIPI 2-lane
Maximum Image Transfer Rate		3280 x 2464 @ 21 fps
Mating Connector	Part#	1-1734248-5
	Number of Positions	15
	Pitch	0.039" (1.00mm)



LI-IMX219-MIPI-FF-NANO SPECIFICATION

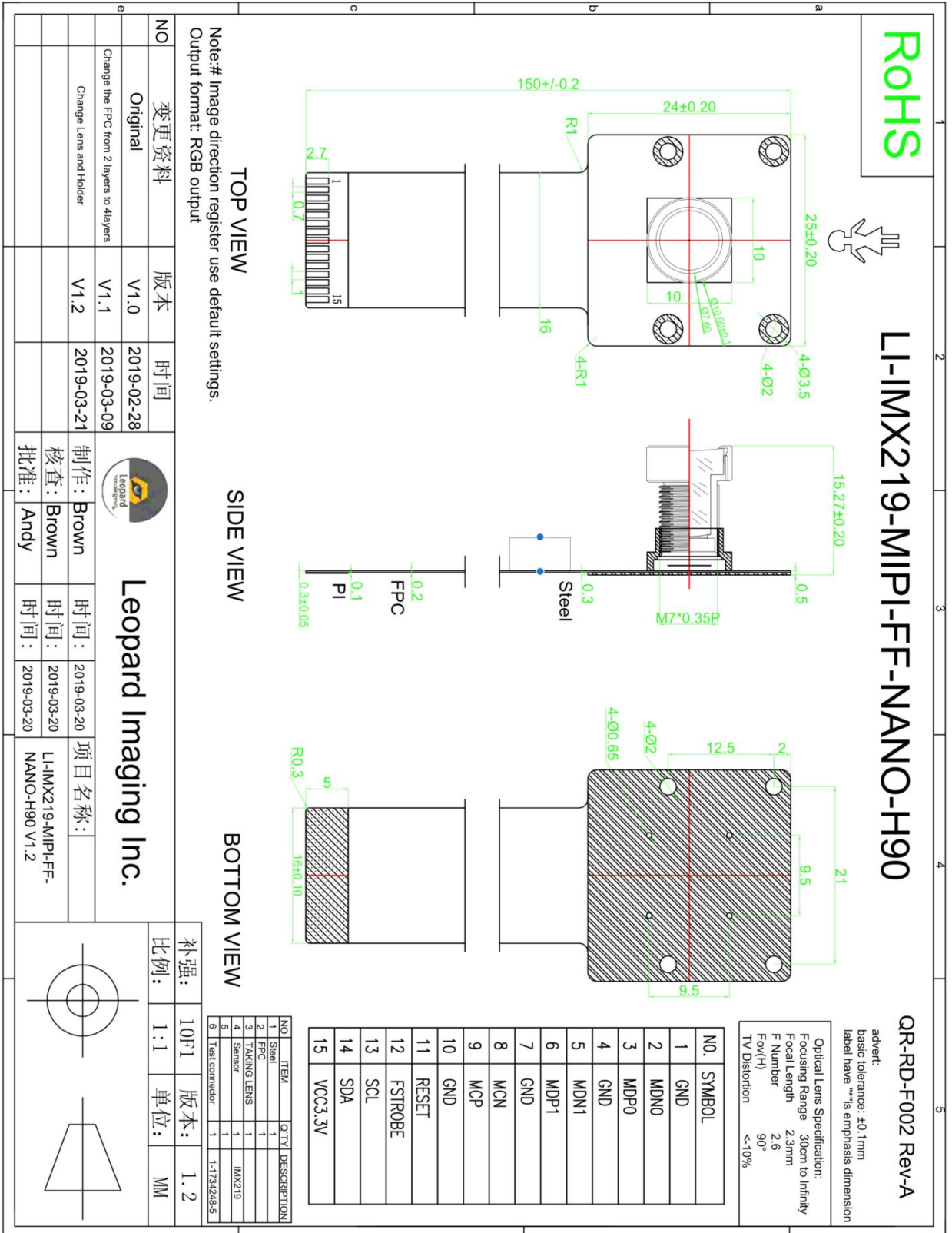
Pin Assignment

No.	Name	Pin Type	Description
1	GND	Ground	
2	MDN0	O	MIPI data positive output
3	MDP0	O	MIPI data negative output
4	GND	Ground	
5	MDN1	O	MIPI data positive output
6	MDP1	O	MIPI data negative output
7	GND	Ground	
8	MCN	O	MIPI clock negative output
9	MCP	O	MIPI clock positive output
10	GND	Ground	
11	RESET	I	Reset
12	FSTROBE	O	Strobe output
13	SCL	I	
14	SDA	I/O	
15	VCC3.3V	Power	

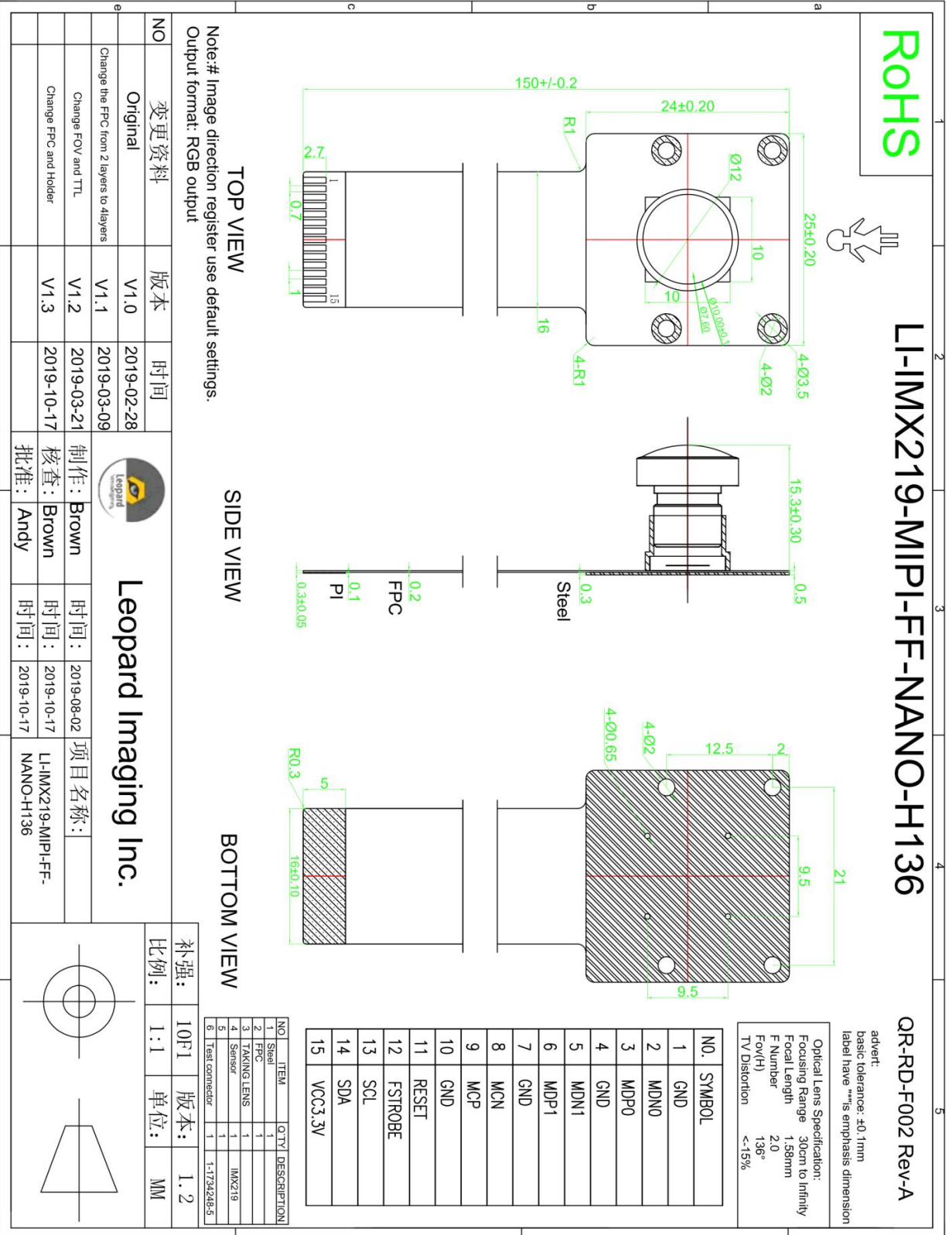


LI-IMX219-MIPI-FF-NANO SPECIFICATION

Mechanical Diagram



LI-IMX219-MIPI-FF-NANO SPECIFICATION



LI-IMX219-MIPI-FF-NANO SPECIFICATION

ROHS

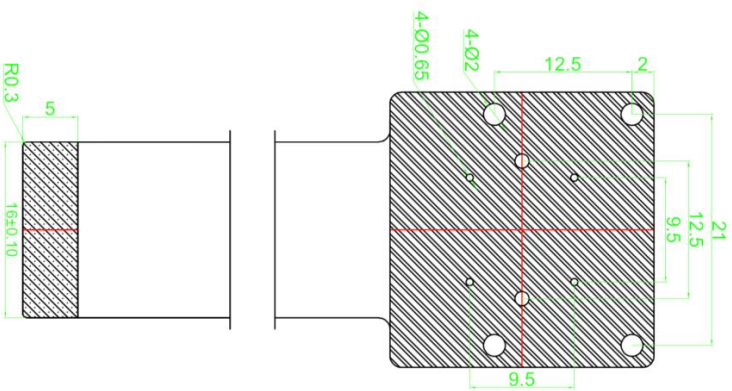
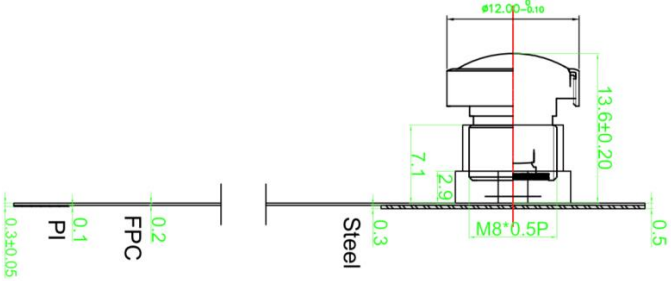
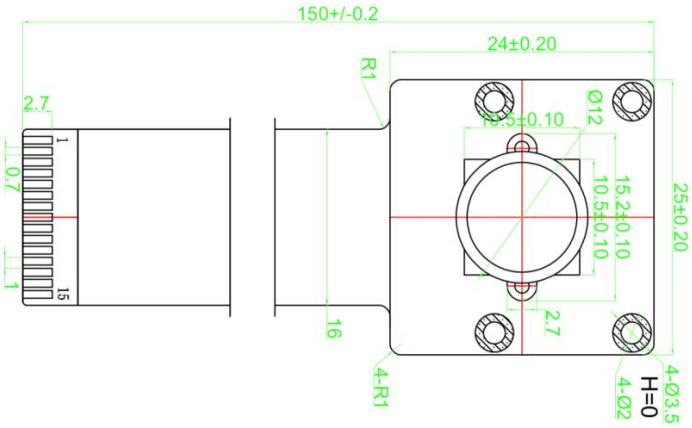


LI-IMX219-MIPI-FF-NANO-H145

QR-RD-F002 Rev-A

advert:
basic tolerance: ±0.1mm
label have "" is emphasis dimension

Optical Lens Specification:
Focusing Range 30cm to Infinity
Focal Length 1.55mm
F Number 2.5
Fov(H) 145°
TV Distortion <-15%



NO.	SYMBOL
1	GND
2	MDNO
3	MDPO
4	GND
5	MDN1
6	MDP1
7	GND
8	MCN
9	MCP
10	GND
11	RESET
12	FSTROBE
13	SCL
14	SDA
15	VCC3.3V

TOP VIEW

SIDE VIEW

BOTTOM VIEW

Note: # Image direction register use default settings.
Output format: RGB output FPC 4 Layers

NO	变更资料	版本	时间	Leopard Imaging Inc.		
	Original	V1.0	2019-02-28	制作:	Brown	时间: 2019-03-20
	Change the FPC from 2 layers to 4layers	V1.1	2019-03-09	检查:	Brown	时间: 2019-03-20
	Change FOV and TTL	V1.2	2019-03-18	批准:	Andy	时间: 2019-03-20
				项目名称:	LI-IMX219-MIPI-FF-NANO-H145 V1.2	

补强:	10F1	版本:	1.1
比例:	1:1	单位:	MM

