

3D Maker education

Earmould 3D scanner

Ear Figure



One-button
operation



Metal body



Rapid
scanning



Ultra-high
precision



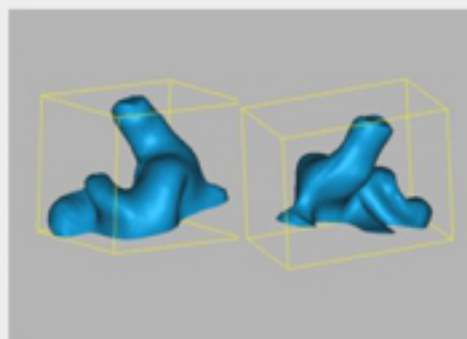
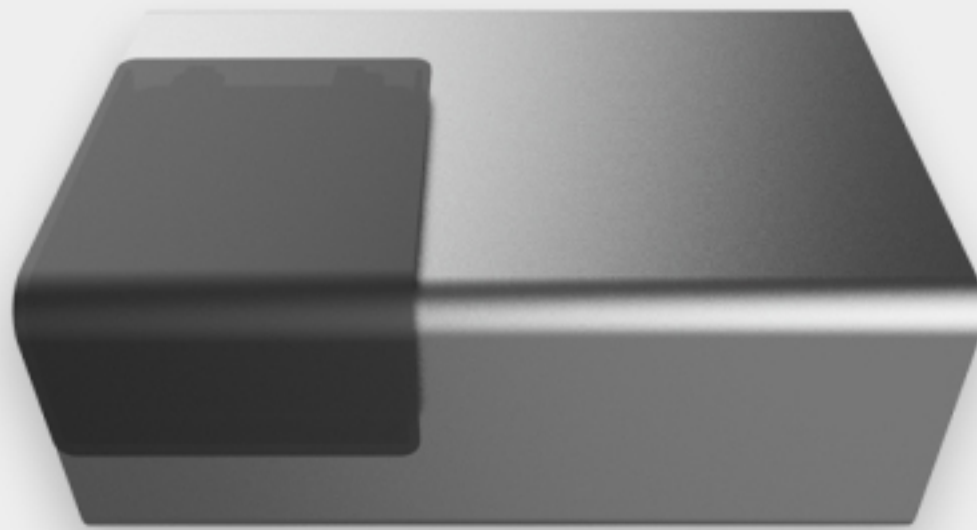
Automatic
smoothing



Perfectly
compatible

Product Introduction

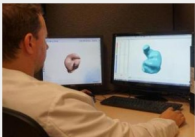
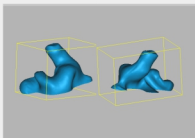
EarFigure customizes the hearing aid. In the process of the headset, precise access to the customer's ear. 3d data to ensure the production of finished products and customers' bodies. The 1:1 nicely



Technology Principle

EarFigure earmould 3D scanner is a professional-grade medical 3D scanner introduced by BB3D for invisible hearing aids and custom earphone manufacturers. It utilizes high-precision structured light 3D scanning technology to acquire 3D data of earmarks with multi-axis full-automatic 3D scanning. With the 3 shape shell design software, Envisiontec 3D prints seamlessly.

Custom hearing AIDS/earphones





#000000
3D COMPUTER VISION TECH

Product parameters

■ Weight	12KG
■ Dimension	425*285*177mm
■ Scan accuracy	≤0.03mm
■ Scan time	≤4min(Whole scan)
■ Scan scope	80*80*75mm(Length, width, height)
■ Sensor	3 Megapixel*2 Industrial CMOS
■ Light source	Human eye safety LED cold light
■ Scanning mode	Turntable auto scan
■ Data format	STL,ASC,OBJ,PLY,VTX OFF
■ Recommend Configuration	Recommended configuration: OS Windows7 64-bit CPU intel i5 processor RAM 6G or above GPU NVIDIA GTX 750 or above