

快速指南 (Array Blocks)

Quick Guide(Array Blocks)

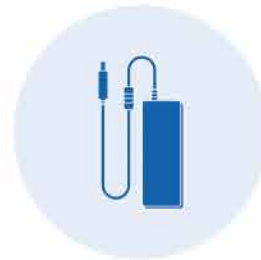
一、设备清单 Device List



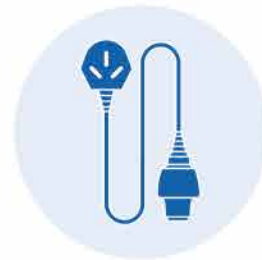
扫描头
Scanner Probe(SP)



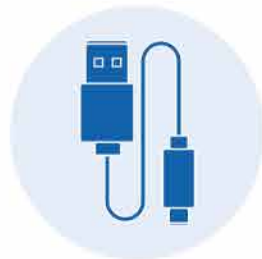
转台主体
Turntable Body(TP)



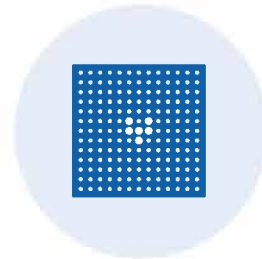
电源适配器
Power Adapter(PA)



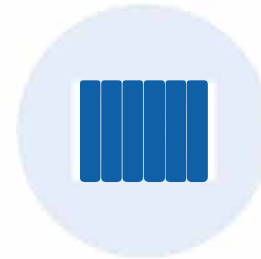
适配器的电源线
Power Cable(PC)



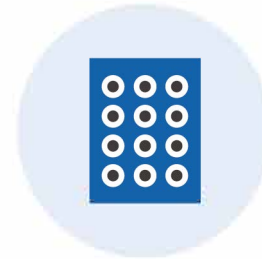
Type C线
(Type C Line)



标定板
Calibration Board



蓝丁胶
Blue Tack



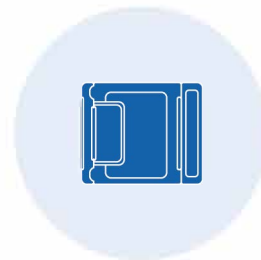
标记点
Marks



合格证
Certificate



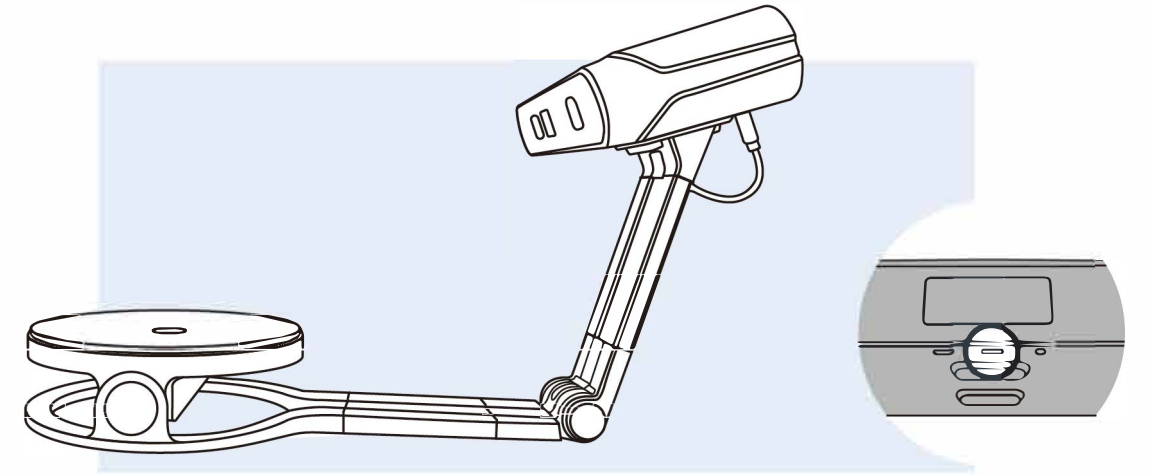
保修卡
Warranty Card



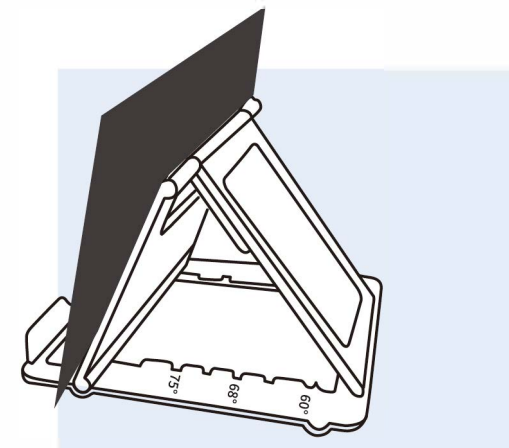
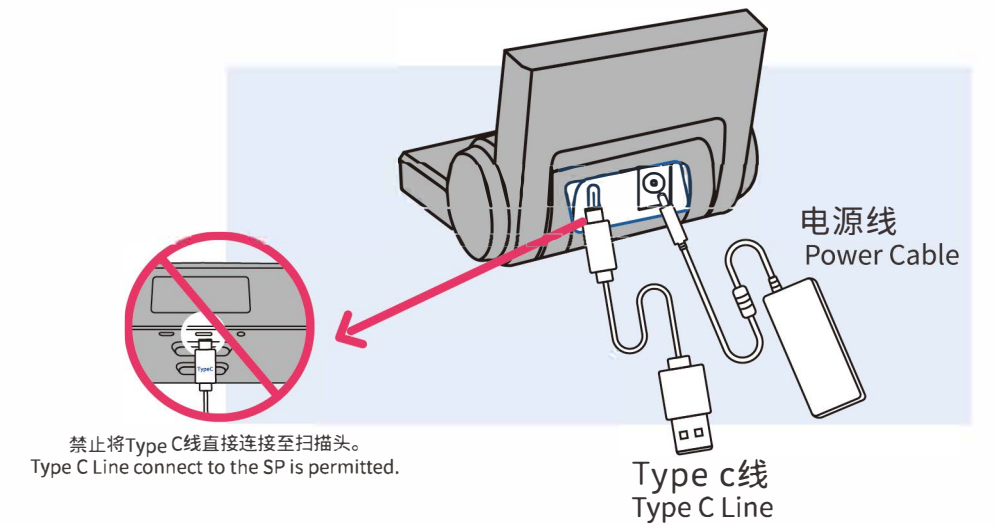
标定板支架
Calibration plate bracket

二、设备组装 Device Assemble

1. (转台扫描) 扫描头放置在转台主体上面, 转台线连接至扫描头
1. (Turntable Scan) Put the Scanner Probe(SP) on the Turntable Body(TP), TP line connect to the SP



- 2.Type C线连接至转台主体和电脑端电源适配器连接至转台主体
2.Type C line connect to the TP and Computer, PA connect to the TP



- 3.标定板组装
3.Assemble the Calibration

三、软件安装 Install the Software

1. 安装扫描软件之前, 请先关闭桌面助手、360安全卫士等杀毒软件
1. Before installing the scanning software, please turn off the DESKTOP SECURITY GUARDS AND OTHER ANTI-VIRUS SOFTWARE
2. 请以管理员身份运行安装软件, 软件关闭后, 请等待30秒钟左右后再重启软件
2. (Run as Administrator, when closed the software, please waiting for 30seconds when re-start the software)
3. 软件默认安装在D盘, 可手动选择安装目录
3. The software is installed on the D disk by default, and the installation directory can be selected manually

四、扫描注意事项 Scan Notes

1. 不适合扫描的物体 Those objects can not be scan



标定时, 标定板位置需放在相机、转台的正中心
When calibration, put the Calibration Board in the middle of the Camera and Turntable

2. 电脑配置推荐 Recommended Computer System

OS: Windows 7 (64位) OS: Windows 7, 64-bit operating system
CPU: Intel i5处理器 CPU: Intel i5 Processor
RAM: 4GB及以上 RAM: 4GB or above
GPU: NVIDIA GTX650及以上 GPU: NVIDIA GTX650 or above

五、扫描操作过程 Scanning

